

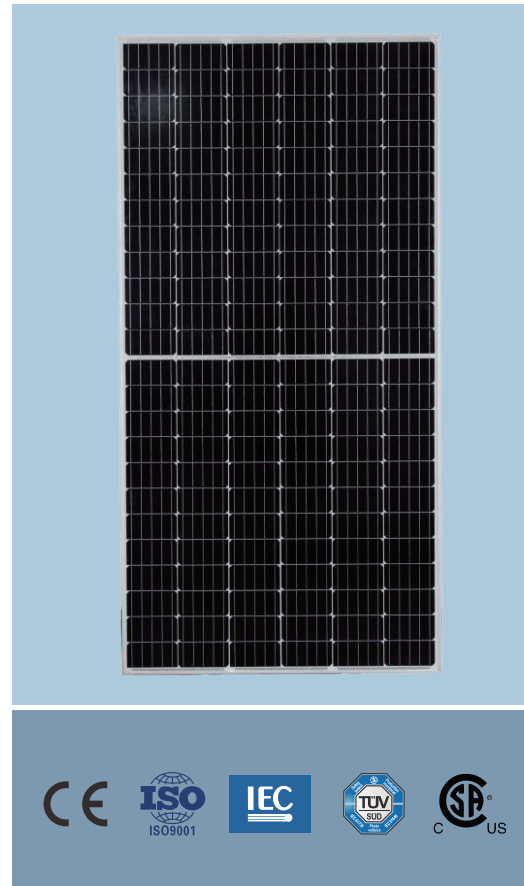


SK-435P6-144M SK-440P6-144M SK-445P6-144M

SK-450P6-144M SK-455P6-144M SK-460P6-144M

MONO HALF -CELL 9BB/10BB

Representation	Product Name	Half-Cell	Solar Cell Type	Wattage	Silicon Type
EXAMPLE	SK-450P6-144M	144 PCS	166×166MM	450W	M:Monocrystalline

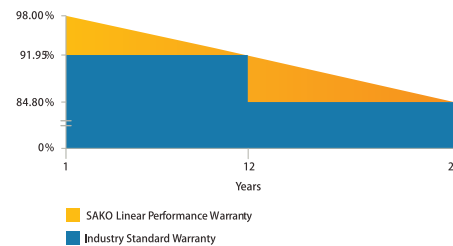


Features

- High module conversion efficiency**
Module efficiency up to 21.16%
- Half-cell Design**
Less energy loss caused by shading due to new cell string layout and lower cell connection power loss due to half-cell design.
- Excellent weak light performance**
More power output in weak light condition such as cloudy, morning and sunset
- Higher Durability against harsh environment**
Reliable quality leads to a better sustainability even in harsh environment
- Lower operating temperature**
Lower operating temperature and temperature coefficient increases the power output
- Anti- PID (Potential induced degradation)**
Excellent Anti-PID performance
- Lower LCOE**
2% more power generation, lower LCOE

Warning: Read the Installation and User Manual in its entirety before handling, installing, and operation smart Solar modules.

25 Years Linear Warranty



25 Years output guarantee
12 Years quality assurance
5-year limited warranty of materials and workmanships.

Note: This publication summarizes product warranty and Specifications which are subject to change without notice

ELECTRICAL PERFORMANCE

Electrical Parameters at Standard Test Conditions(STC)						
Module Type	SK-435P6-144M	SK-440P6-144M	SK-445P6-144M	SK-450P6-144M	SK-455P6-144M	SK-460P6-144M
Power Output (Pmax / W)	435W	440W	445W	450W	455W	460W
Power Output Tolerances	±3%	±3%	±3%	±3%	±3%	±3%
Module Efficiency (ηm)	20.01%	20.24%	20.47%	20.70%	20.93%	21.16%
Voltage at Pmax (Vmp / V)	40.35V	40.55V	40.75V	40.95V	41.18V	41.37V
Current at Pmax (Imp / A)	10.78A	10.85A	10.92A	10.99A	11.05A	11.12A
Open-circuit Voltage (Voc / V)	48.51V	48.72V	48.93V	49.11V	49.32V	49.53V
Short-circuit Current (Isc / A)	11.45A	11.51A	11.57A	11.63A	11.69A	11.75A

STC:1000W/m² irradiance, 25°C module temperature, AM1.5g Spectrum according to EN 60904-3.

Electrical parameters at NMOT (Irradiance 800 W/m ² , ambient temperature 20 °C, AM=1.5, wind speed 1 m)						
Module Type	SK-435P6-144M	SK-440P6-144M	SK-445P6-144M	SK-450P6-144M	SK-455P6-144M	SK-460P6-144M
Power Output (Pmax / W)	322W	326W	330W	333W	336W	339W
Voltage at Pmax (Vmp / V)	37.5V	37.9V	38.1V	38.3V	38.5V	38.7V
Current at Pmax (Imp / A)	8.58A	8.6A	8.66A	8.7A	8.73A	8.76A
Open-circuit Voltage (Voc / V)	46V	46.2V	46.3V	46.5V	46.7V	46.7V
Short-circuit Current (Isc / A)	9.12A	9.17A	9.23A	9.29A	9.35A	9.35A

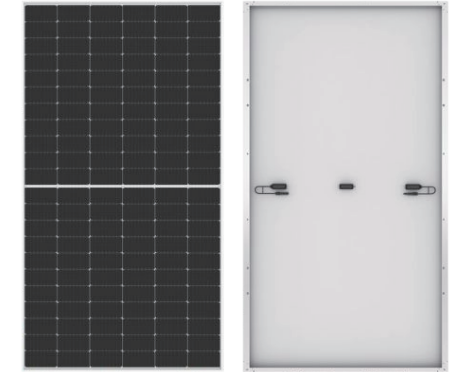
Thermal Characteristics			
Normal operating cell temperature	NOCT	°C	45±2
Temperature coefficient of Pmax	γ	%/°C	-0.35
Temperature coefficient of Voc	βvoc	%/°C	-0.27
Temperature coefficient of Isc	αisc	%/°C	0.05
Temperature coefficient of Vmpp	βvmpp	%/°C	-0.42

Operating Conditions	
Max. system voltage	1500Vdc
Max. series fuse rating	20A
Operating temperature range	-40°C to 85°C
Max. static load, front (e.g., snow)	5400Pa
Max. static load, back (e.g., wind)	2400Pa
Max. hailstone impact (diameter)	25mm/23m/s

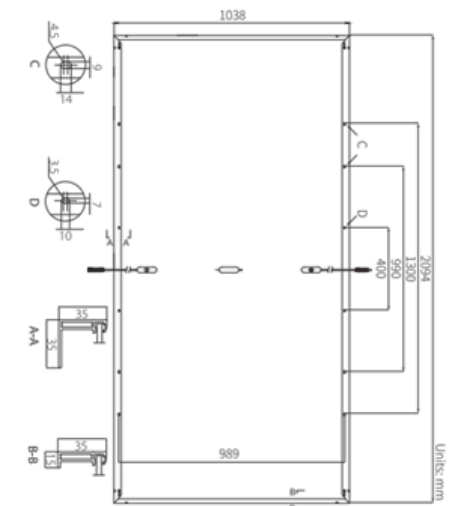
Construction Materials	
Front cover (material/thickness)	low-iron tempered glass/3.2mm
Cell (quantity/material)	144PCS Mono Perc (166MM)
Frame (Materials)	anodized aluminum alloy/silver/clear
Junction box (protection degree)	≥IP65
Cable (length/cross-sectional area)	300mm/4mm ²

General Characteristics	
Products Dimension (L/W/H)	2094*1038*35mm
Weight	22.5KGS
QTY of per pallet	30pcs per pallet
Packaging box dimensions	2295*1095*1145MM
No. of pallets for 40HQ containers	22 Pallets (660PCS, GW: 760KGS)

Note: This publication summarizes product warranty and Specifications which are subject to change without notice.



Unit: mm



I-V Curves

